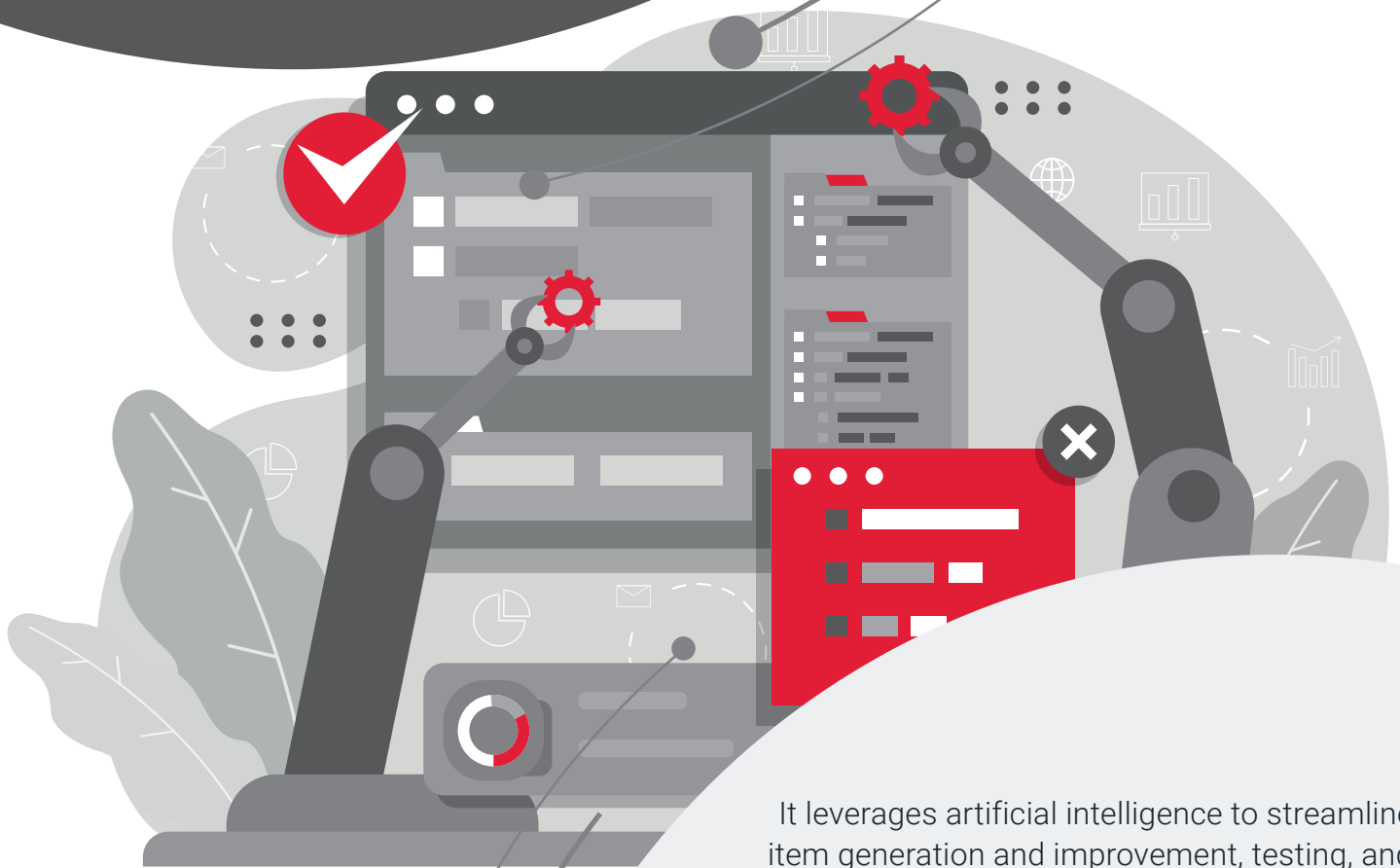


AI OPTIMIZER FOR POLARION

The intelligent assistant for greater efficiency
and quality in engineering workflows.

AI OPTIMIZER FOR POLARION

The AI Optimizer extends Siemens Polarion with AI-based assistance across multiple engineering process steps.



It leverages artificial intelligence to streamline item generation and improvement, testing, and document-related processes – fully integrated within Polarion.

Users benefit from accelerated work, improved quality, and reduced manual effort while maintaining full control over their data.

KEY BENEFITS

Enhance efficiency, quality, and speed in your ALM process with AI-powered assistance - directly integrated into Polaron.



SEAMLESS INTEGRATION

Works natively inside Polaron without external tools



TIME EFFICIENCY

Automates repetitive actions to accelerate daily work



IMPROVED CONTENT QUALITY

Ensures consistent language, structure, and clarity



CONFIGURABLE & SECURE

Adaptable to specific project needs and industries

MAIN USE CASES

DOCUMENT IMPORT WITH OCR

Use OCR technology to extract text from PDFs, PNGs, or JPEGs. Captured content is automatically converted into Polaron work items, reducing errors and manual effort, especially when handling scanned documents.



WORK ITEM ANALYSIS

AI-powered quality checks help create precise, clear, and verifiable items. Supports users of all experience levels and ensures consistent, high-quality specification content.



LINKED WORK ITEM CREATION

Automatically generate comprehensive linked work items from existing requirements. Enhance efficiency and quality for example in test management.

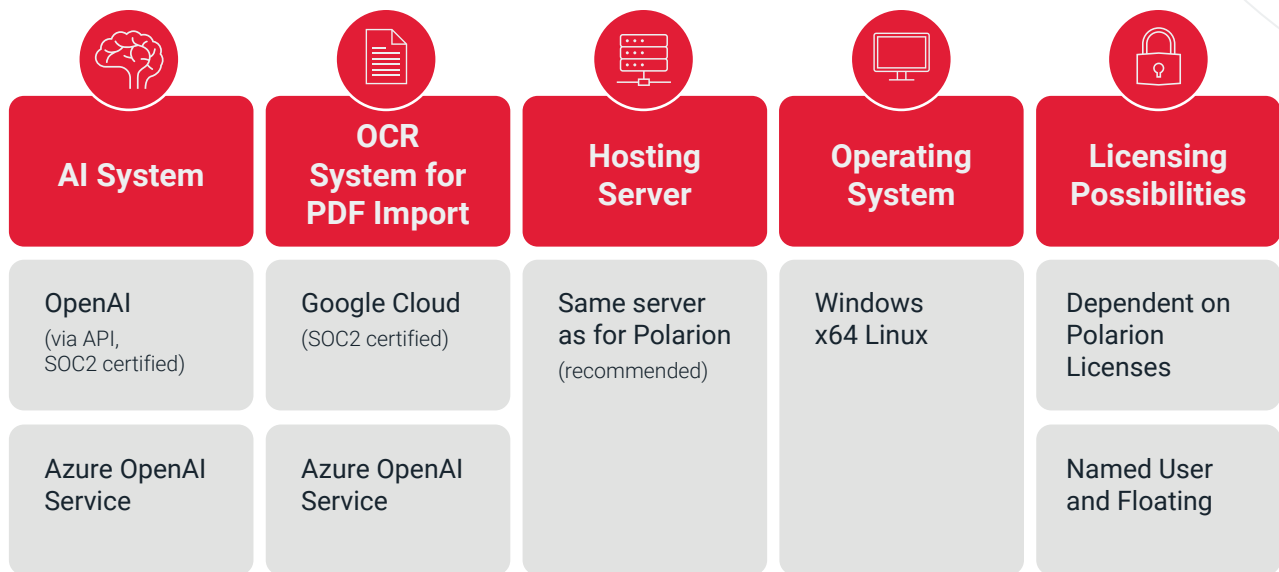


WORK ITEM CREATION VIA CHATBOT

Simplify the creation of Polaron work items through a natural-language chatbot interface. Ideal for logging defects, customer requests, or requirements – even without deep system knowledge. Guided input ensures structured and accurate item creation.



ARCHITECTURE & INTEGRATION



The AI Optimizer operates as an integrated extension within Polaron, managing communication between Polaron and external AI services via the Polaron REST API. It serves as the bridge between Polaron's engineering environment and AI capabilities, enabling seamless collaboration between all system components described below.

Polarion

Central Data and Process Hub

- Stores and manages work items, LiveDocs, test cases, and chatbot input
- User input and output is stored internally

AI Optimizer

Intelligent Coordination Layer

- Manages AI communication workflows, prepares prompts, exchanges data with AI services, interprets results and updates Polaron items
- Central coordinator between Polaron and external AI services through the Polaron AI Optimizer extension and its local agent

OpenAI / Azure OpenAI Service

Natural Language Intelligence

- Performs natural language understanding and generation tasks such as rewriting requirements, test-case generation, and interpreting chatbot inputs, returning structured and high-quality results to the AI Optimizer

Google Cloud OCR / Azure OpenAI Service

Smart Document Recognition

- Uses optical character recognition to capture and process text from scanned documents or image-based documents such as PDFs, PNGs, and JPEGs
- Delivers extracted data to the AI Optimizer for transformation into Polaron-compatible work items

DATA PRIVACY & SECURITY CONSIDERATIONS

POLARION DATA

Polarion Data remains within the customer's infrastructure or cloud environment, ensuring control and compliance.

AI SERVICE CALLS

AI Service Calls (OpenAI/Azure GPT, Google Cloud OCR) can be configured to use specific regional data centers (depending on eligibility) on the OpenAI/Azure GPT and Google Cloud OCR side to meet data residency requirements.

For detailed information on data privacy and storage policies, please refer to the provider of the respective AI system.



Germany

BCT Technology AG
Im Lossenfeld 9, 77731 Willstaett
+49 7852 996-0, info@bct-technology.com
www.bct-technology.com

 [linkedin.com/company/bct-technology-ag](https://www.linkedin.com/company/bct-technology-ag)
 [youtube.com/c/Bct-technology](https://www.youtube.com/c/Bct-technology)

Switzerland

BCT Technology GmbH
Suurstoffi 37, 6343 Rotkreuz
+41 41 784 94 45, info@bct-technology.com
www.bct-technology.com

 [linkedin.com/company/bct-technology-gmbh](https://www.linkedin.com/company/bct-technology-gmbh)
 [youtube.com/c/Bct-technology](https://www.youtube.com/c/Bct-technology)